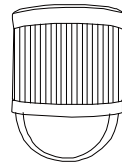


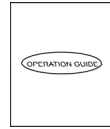
**QUICK GUIDE**

**Package Content**

Before starting to set up your camera, please make sure items below in your box:



Camera



Quick guide

**Note: This camera requires a bracket to install. Please purchase separately.**

For more product details, please visit [www.surveillance-download.com/user/m571.swf](http://www.surveillance-download.com/user/m571.swf)

**Optional Bracket**

Below is the bracket we have to use with this camera, and it is not supplied in the camera sales package. Please purchase separately.












Bracket



Mounting base

**The accessories:**

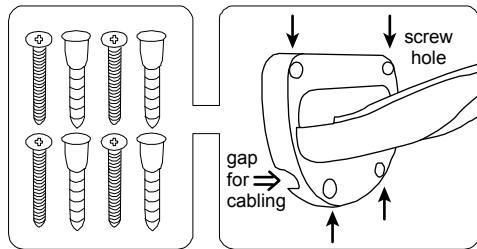
-  x 3 Hex screw nut
-  x 2 Mounting base screw
-  x 4 Wall screws and plugs
-  x 3 M6 Nylok screw (long)
-  x 1 M4 screw
-  x 1 Bracket screw (Phillips)
-  x 2 M6 Nylok screw (short)
-  x 1 Bracket screw (hex socket)
-  x 1 Cap

**Installation**

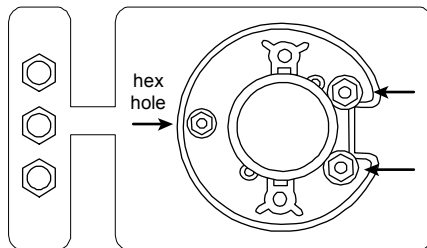
**Step1:** Find the bracket and remove its upper cover, and install the bracket to the wall. Before attach the bracket to the wall, make sure how the cabling should go:

- For cabling along the wall, arrange the camera cable through one of the gaps.
- For cabling through the wall, remember to drill a hole big enough for the cable to go through.

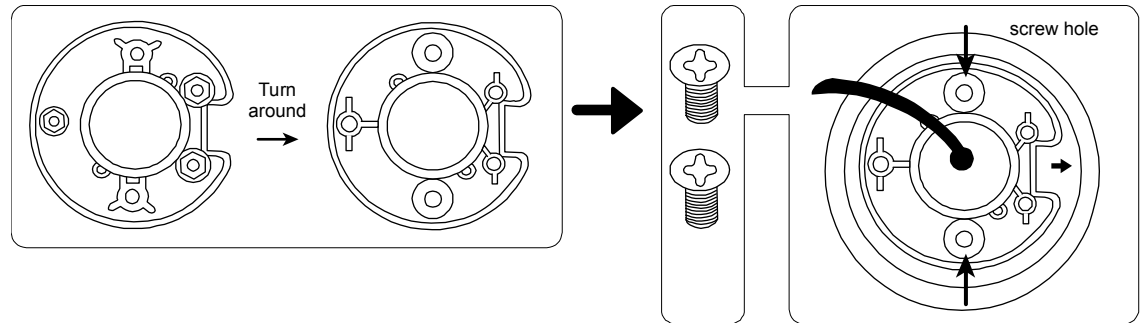
**Step2:** Fasten the bracket to the wall.



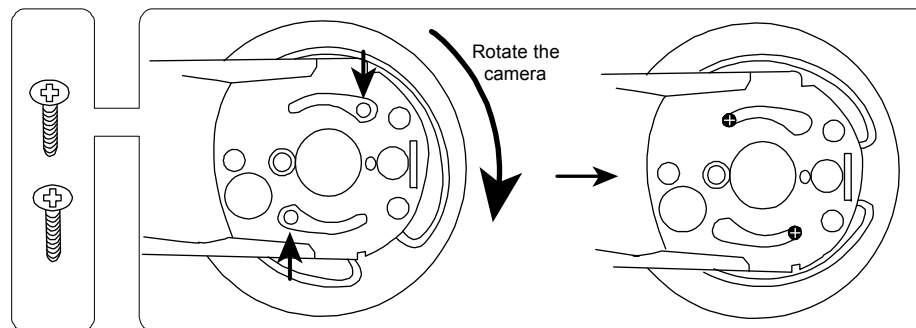
**Step3:** Insert the hex screw nuts to the mounting base, and turn it around.



**Step4:** Find “→” on the camera. Then, place and fasten the mounting base to the camera as indicated below.

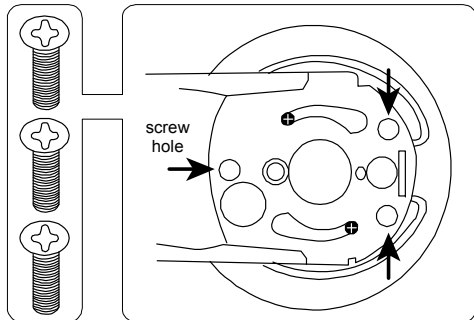


**Step5:** Attach and slightly fasten the camera to the bracket as indicated below. The camera is hooked.

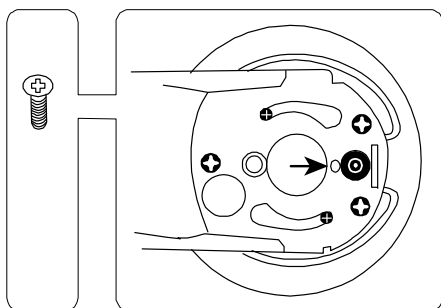


## Installation (Continued)

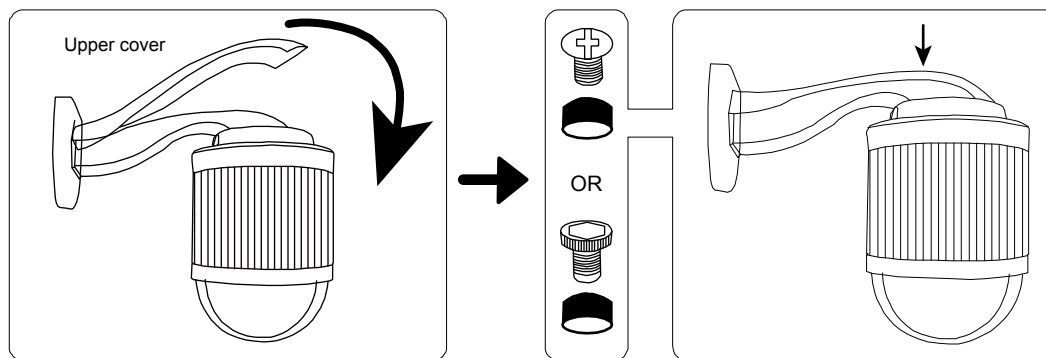
Step6: Slightly secure the camera and the bracket as indicated below.



Step7: Fasten the camera to the bracket with the M4 screw as indicated below.



Step8: Replace the upper cover of the bracket back, and fasten it with a Philips screw or a hex socket screw, and put the cap on it to finish the installation.



## Cable Overview

Color	Cable	Description
--	Power cable	DC12V power supply.
--	RJ45 network cable*	Connect it to a RJ45 cable.
Black & Brown	GND	Ground wire
Yellow	Alarm-in	Reserved for external alarm device connection
Pink	Alarm-out	Reserved for external alarm device connection
Red	RESET	Remove the insulating coating of wire, and twist it with a ground wire together to reset default camera
Blue	Line in	Connect to a line-in device, i.e. a microphone, for audio recording
Green	Line out	Connect to a line-out device, i.e. speaker, for audio output

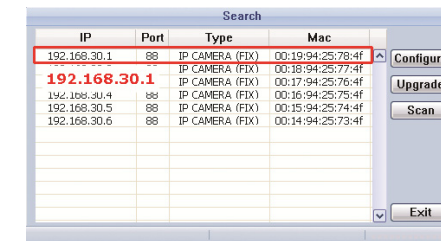
\* For PoE (IEEE802.3af) installation, make sure your network cable has the maximum cable resistance of 20  $\Omega$ , such as CAT.5e or CAT.6 cables, to conform to the standard of IEEE802.3af.

## Camera Configuration

Step1: Connect this camera to your NVR as described in "HD System Connection".

Step2: Connect PC to the HUB connected to your camera(s) with RJ45 network cable.

Step3: Search available devices with "IPScan.exe"; to download "IPScan.exe", please visit [www.surveillance-download.com/user/IPscan.zip](http://www.surveillance-download.com/user/IPscan.zip).



Step4: After searching, set your PC in the same network segment as the specific camera you want to access, such as "192.168.30.xxx" (xxx could be 0~255) in our example

Step5: Note down the IP address and port number of the camera you want to access, such as "192.168.30.1" and "88" in our example.

Step6: Open Internet Explorer on the PC, and enter the IP address and port number in the URL column to access the camera. The format is http://ipaddress:portnum, such as <http://192.168.30.1:88> in our example.

Step7: Enter the default user name (**admin**) and password (**admin**) to access the camera. Then, go to "Config" on the top right corner for more advanced configurations.